

EMBER™

Autodesk Standard Clear Prototyping Resin (PR48)

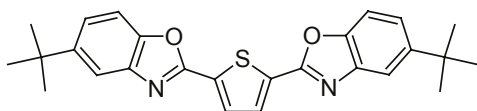
The Autodesk Standard Clear Prototyping Resin (PR48) for the Ember DLP SLA 3D Printer properly adheres to the build head, photopolymerizes at a reasonable rate, clouds Ember's PDMS window significantly less than other resins, and generally works for most prints. But it's a starting point. We're inviting you to understand how it works, make changes, make it better, and share those changes. Maybe you can make something awesome in fewer than 48 tries?

Read more on our [blog](#)

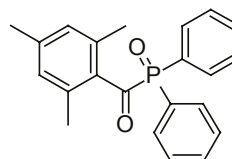
PR48 Formulation (all percentages are wt/wt):

- Oligomer: Allnex Ebecryl 8210 **39.776%**, Sartomer SR 494 **39.776%**
- Photoinitiator: Esstech TPO+ (2,4,6-Trimethylbenzoyl-diphenylphosphineoxide) **0.400%**
- Reactive diluent: Rahn Genomer 1122 **19.888%**
- UV blocker: Mayzo OB+ (2,2'-(2,5-thiophenediyl)bis(5-tertbutylbenzoxazole)) **0.160 %**

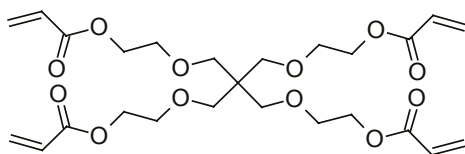
Mayzo OB+



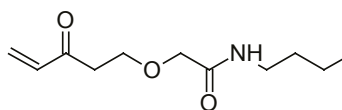
PL-TPO



Sartomer SR 494 LM



Genomer 1122



For more information and where to order, visit the [Ember Website](#)

IMPORTANT NOTICE:

The Autodesk Standard Clear Prototyping Resin (PR48) is intended for professional use only with the Autodesk® 3D Ember Printer. We are releasing the chemical formula for PR48 pursuant to the terms of the Creative Commons Attribution-ShareAlike 4.0 International (CC BY-SA 4.0) license [<http://creativecommons.org/licenses/by-sa/4.0/>]. Any decision to undertake work with this formula means that you are agreeing to the following: Such work occurs at your own risk, and as a result, you bear sole responsibility (a) for compliance with all applicable laws, rules and regulations and (b) for any consequences and liabilities, including damage to any person or property, arising in connection with such work. BEFORE you undertake any work with the formula, Autodesk recommends that you review carefully the safety warning notifications and the Material Safety Data Sheet for PR48 at [<https://support.ember.autodesk.com/hc/en-us/articles/203700175-Material-Safety-Data-Sheet>]. Autodesk expressly disclaims all warranties (including those attendant to the Autodesk® 3D Ember Printer) in relation to your creation, use or distribution of any work you undertake with the formula.

By working with the formula, you also agree that any modifications you make are unknown to Autodesk, and that any modified formula you prepare could result in the creation of a different or new product for which Autodesk is not legally responsible. You also agree that if you modify the formula in any way, you could assume additional legal responsibilities, including the duty to warn other persons that are known only to you and not to Autodesk. You also agree not to seek to hold Autodesk legally responsible, in any way, for any injuries or other liabilities resulting from your use or modification of the formula.